

HİCÂZ  
SOFYAK

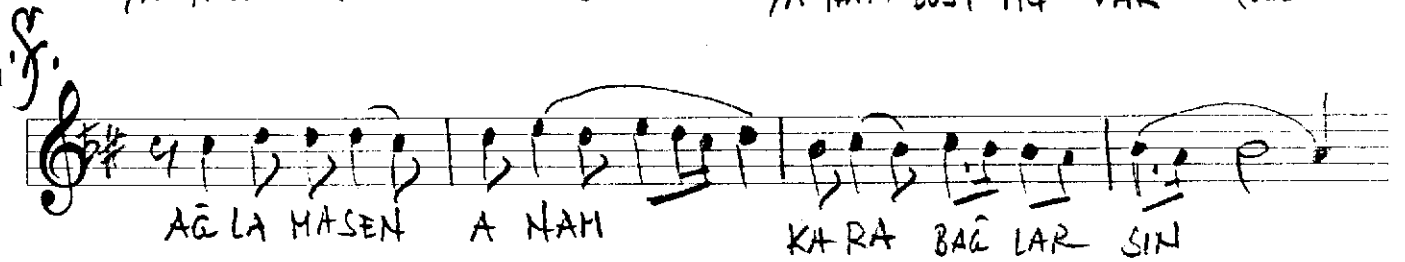
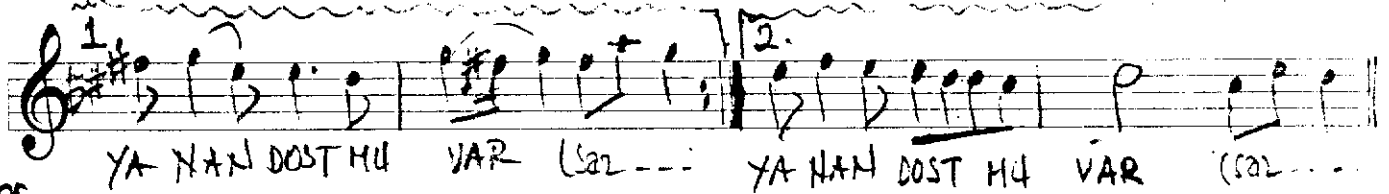
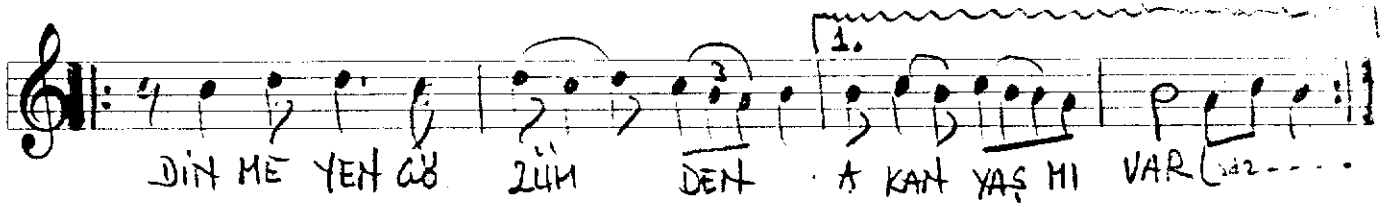
BANA EŞTEN DOSTTAN..

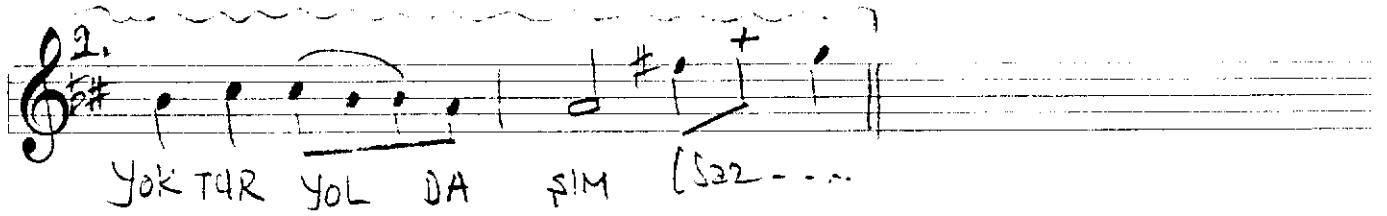
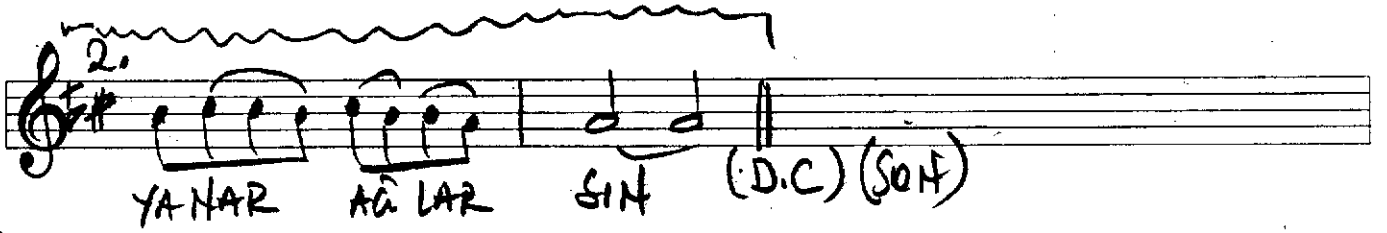
Söz

: NAZHI YÜKSELEN

Müzik

: NAZHI YÜKSELEN





BANA EŞTEN DOSTTAN GÜLEN YÜZ MÜ VAR  
DİNMEYEN GÖZÜNDEN AKAN YAŞ MI VAR  
YILLARDIR ÖKSÜZÜM YANAM DOST MU VAR  
AĞLAMA SEN ANAM KARA BAĞLARSIN  
KAYBEDER YAVRUMU YANAR AĞLARSIN  
ANAMDAN DOĞALI ĞİLELİ BAŞIM  
GARİBİM GURBET ELDE YOKTUR YOLUŞIM  
HİCRANIMI UNUTTURDU BANA SON EŞİM  
AĞLAMA SEN ANAM KARA BAĞLARSIN  
KAYBEDER YAVRUMU YANAR AĞLARSIN.